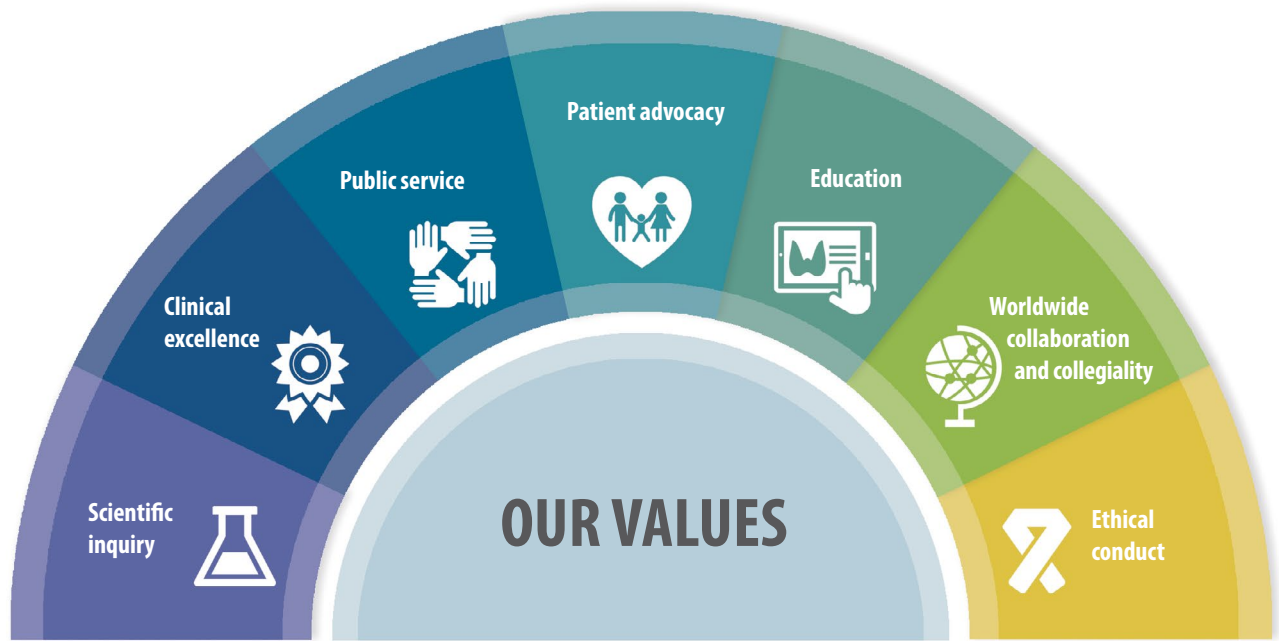


# 2016 American Thyroid Association Annual Report

## AT THE CENTER OF IT ALL



AMERICAN THYROID ASSOCIATION  
ATA | *Founded 1923*



## MISSION

The American Thyroid Association is the leading organization devoted to thyroid biology and to the prevention and treatment of thyroid disease through excellence in research, clinical care, education, and public health.



“ Being a member of the ATA [helps me] stay updated on the current literature and research for the medical and surgical treatment of thyroid diseases. ”

*Steven Richard Bomeli, M.D.  
Otolaryngologist, Georgia Regents University*

“ The ATA has been my professional home since my fellowship and it has been a privilege to serve with my many valued colleagues and with such a committed and talented staff. I am most grateful to my mentors, who have encouraged and guided me. The professional and personal growths I have experienced from my involvement with the ATA are immeasurable. ”

*Gregory A. Brent, M.D.  
2016 Distinguished Service Award Recipient, Departments of  
Medicine and Physiology, David Geffen School of Medicine;  
University of California-Los Angeles Chair, Department of Medicine  
at VA Greater Los Angeles Healthcare System*



## FROM THE PRESIDENT AND THE EXECUTIVE DIRECTOR

Dear Friends of the American Thyroid Association,

We are excited to celebrate 94 years at the American Thyroid Association (ATA). And we're so glad you chose the ATA as your go-to community for information, education, resources, and everything related to the thyroid!

Since our inception in 1923, the ATA has been committed to scientific inquiry, clinical excellence, public service, education, and collaboration. As the leading organization devoted to thyroid biology and the prevention and treatment of thyroid disease, we pride ourselves on sharing the most up-to-date news and investigations in our field.

We all know the significance of the thyroid and how its hormones regulate fundamental body functions like breathing, heart rate, body weight, body temperature, and more. Without the thyroid gland, our organs wouldn't work as efficiently. The scope of work within our professional society reaches a variety of unique audiences every day, innately weaving all of us together—scientists, researchers, clinicians, patients, families, pharmaceutical companies, and donors. Our scientists and researchers discover new information that helps physicians present the latest findings to thyroid patients and their families. Working with pharmaceutical companies, our physicians use their expertise to find better treatments and diagnostics. These collaborations are made possible by the generosity of our donors who fund education, research, and patient care resources.

Advancing knowledge and patient care are important to the ATA. From featuring monthly thyroid awareness campaigns to offering patient support resources online, ATA provides a wealth of expertise to those we serve and those who help us diagnose, treat, and prevent thyroid disease.

This annual report provides you with an overview of our 2016 initiatives and the successes and the far-reaching impact that our work has had in advancing the field of thyroidology. On behalf of the staff, officers, and Board of Directors at the ATA, thank you for your continued dedication and generous support.

We look forward to continuing our legacy in the future.

With gratitude,



John C. Morris, III, M.D.

2016–2017 President, American Thyroid Association



Bobbi R. Smith, CAE

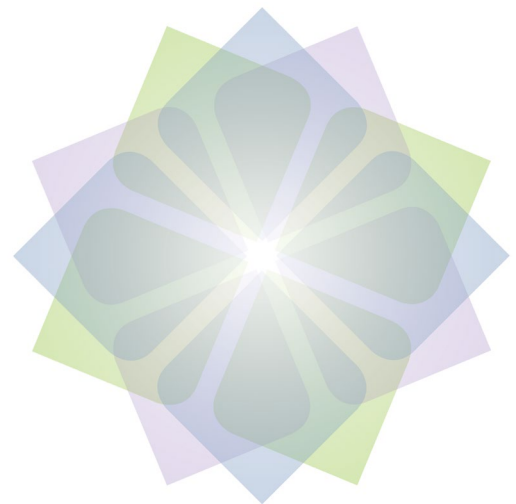
Executive Director, American Thyroid Association



John C. Morris, III, M.D.



Bobbi R. Smith, CAE



P.S. We hope to see everyone at the 87th Annual Meeting, October 18–22, in Victoria, British Columbia!

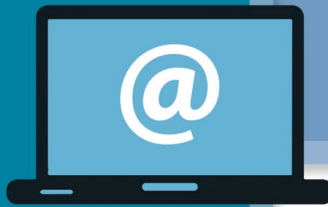
## 2016: A YEAR IN REVIEW

### WHAT YOU HELPED US ACHIEVE

#### Website Views

**868,468** Total number of pages viewed for Spanish brochures

**7,350,599** Total number of Website pages viewed



#### Social Media

**30,107** Followers



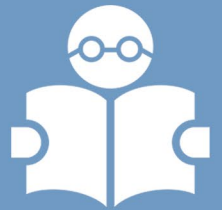
#### Thyroid Information Brochures

**5** Thyroid information brochures were published:

- FNA Biopsy of Thyroid Nodules
- Graves' Ophthalmopathy / Graves' Dermopathy
- Hashimoto's Thyroiditis
- Medullary Thyroid Cancer
- Primary Thyroid Lymphoma

**7** Thyroid information brochures were translated to Spanish:

- FNA Biopsy of Thyroid Nodules
- Goiter
- Hashimoto's Thyroiditis
- Thyroid Disease in Pregnancy
- Thyroid Function Tests
- Thyroid Hormone Treatment
- Thyroid and Weight

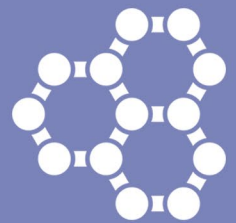


#### Grants

**\$2.2 million** In research grants awarded by ATA

**85** Grant recipients

**8** Researchers in 2016 received grants through the American Thyroid Association and through our partners, Bite Me Cancer and ThyCa:Thyroid Cancer Survivors' Association, Inc.



**\$230,000** Grant dollars were awarded in 2016 in the subjects of:

- Thyroid Development and the Brain
- Thyroid Hormone and Metabolism
- Clinical Disorders of Thyroid Function

## Annual Meeting

The 86th Annual Meeting in Denver had record attendance with

**1,314** Attendees

**472** Scientific Abstracts submitted

**33** Countries represented in Scientific Abstracts

- Top 3 abstract categories:**
- Disorders of Thyroid Function
  - Thyroid Cancer
  - Thyroid Nodules & Goiter



## Membership

**1,780** Members who are represented by

**43** Countries

**280** New members who joined the ATA in 2016

## Education

**242** Participants attended the Spring Satellite Symposium, "Management of Hyperthyroidism and Thyroid Illness in Pregnancy" in Boston, Massachusetts

**284** Trainees registered for the E. Chester Ridgway Trainee Conference

**107** Trainees received travel grants to attend the 2016 Annual Meeting



## Online Resources

The 2016 Guidelines of the American Thyroid Association for Diagnosis and Management of Hyperthyroidism and Other Causes of Thyrotoxicosis was released.

**1,400** GUIDELINES Pocketcards were distributed

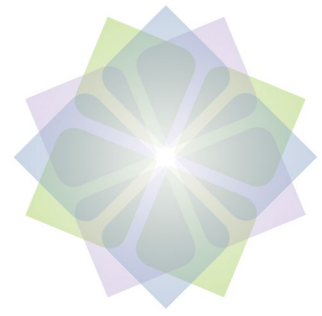
**35,514** Total pageviews for online Thyroid calculators:

- Thyroid Cancer Staging
- Double Time Calculator
- Change in Thyroid Nodule Volume Calculator

**134,537** Pageviews for "Find a Thyroid Specialist"

**1,001** Thyroid Connect Calculator app units sold





## CONGRATULATIONS TO OUR 2016 GRANT RECIPIENTS

### MEET OUR RESEARCH GRANT RECIPIENTS



**Liora Katz, Ph.D.**

Icahn School of Medicine  
at Mount Sinai

Research Topic:  
*"T3 and glucose signaling in  
pancreatic  $\beta$ -cells"*

Dr. Katz's research focuses on diabetes, obesity, and the role that thyroid hormones play in cell function, specifically gene expression.



**Connie Meeyoung Rhee, M.D.**

University of California-Irvine

Research Topic:  
*"Thyroid functional disease,  
mental health, and quality of  
life in chronic kidney disease  
patients"*

Dr. Rhee's research emphasizes that chronic functional thyroid disease is highly common in patients suffering from chronic kidney disease. Her research also demonstrates that hypothyroidism, a condition that occurs when the body lacks the sufficient thyroid hormone, is associated with a higher mortality risk among patients who have kidney disease.



**David S. Sharlin, Ph.D.**

Minnesota State University

Research Topic:  
*"Thyroid hormone and local  
insulin-like growth factor  
production in developing brain"*

With research that concentrates on the brain and nervous system, Dr. Sharlin and his assistants are learning how an insufficient thyroid hormone affects development across the lifespan.



**Kristen R. Vella, Ph.D.**

Beth Israel Deaconess  
Medical Center

Research Topic:  
*"Neuronal regulation of hepatic  
thyroid hormone clearance"*

Dr. Vella investigates the specific cells that are required to maintain adequate thyroid hormone levels. Most recently, her research has highlighted the significant role the thyroid has in regulating metabolism.



## THYCA RESEARCH GRANT RECIPIENTS



**Trevor Angell, M.D.**

Brigham and Women's Hospital and Harvard Medical School

Research Topic:  
*"Assessment of circulation immune suppressor cells for predicating treatment response in follicular cell derived thyroid carcinoma"*

Dr. Angell is investigating myeloid-derived suppressor cells (MDSC), also known as immune cells, in patients with thyroid nodules.



**Viswanath Gunda, Ph.D.**

Massachusetts General Hospital

Research Topic:  
*"Combining immune checkpoints inhibitors with BRAF targeted therapy in thyroid cancer"*

Dr. Gunda is studying the types of molecular mechanisms that are needed to overcome cell resistance in BRAF therapy. He is also researching different immunotherapeutic strategies used to treat thyroid cancer.



**Nikita Pozdeyev, M.D., Ph.D.**

University of Colorado

Research Topic:  
*"Rational combination therapies with lenvatinib for advanced thyroid cancer"*

Dr. Pozdeyev is researching how genes affect a patient's response to certain thyroid cancer drugs. He is also applying discovery-based science to develop and improve existing treatments for advanced thyroid cancer.

## BITE ME CANCER RESEARCH GRANT RECIPIENT

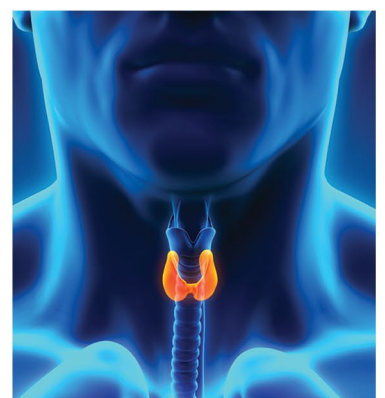


**Irene Min, Ph.D.**

Weill Cornell Medical College

Research Topic:  
*"Application of chimeric antigen receptor (CAR)-T cell therapy in aggressive thyroid cancer"*

A major focus of Dr. Min's research is understanding how cells convert from DNA to RNA. Transcription regulation is important to Dr. Min's study of both stem cells and cancer and how to further advance related technologies for diagnostics and therapeutics.



## PERSONAL STORIES

### FOSTERING THE NEXT GENERATION

“We established the Ridgway Legacy Fund to support travel, education, housing, and the contributions of young thyroid-ologists. Thus, it’s extremely important that we are successful and continue the training of these young people. That is the purpose of the Ridgway Legacy Fund.”

John Morris, III, M.D.  
2016-2017 ATA President

“It’s great getting to interact with people from all over the country and to get to hear about their exciting research. It’s expensive to travel and as trainees we wouldn’t be able to be here without the generous support,” says Andrew Hinson, M.D., Otolaryngology Resident, who is one of the recipients of the ATA Trainee Grant Program. The ATA encourages and supports the career advancement of our associate members—students who are attending medical or graduate school, residents, or fellows in post-graduate clinical or basic training—through the E. Chester Ridgway Trainee Conference, Trainee Grant Program, and Trainees’ Corner. When we invest in the next generation of professionals, we give our trainees the opportunity to develop their career interests. In return, their research fuels the future work of ATA.

Established in 2014, the “Ridgway” is designed to advance basic and clinical trainee knowledge and understanding of thyroid physiology, disease, and treatment. The conference is in memory of Dr. E. Chester “Chip” Ridgway, an endocrinologist, mentor, and Past President of the ATA. The Ridgway provides robust educational opportunities such as round table discussions, career development resources, and interactions with senior thyroid experts/legacy members who share knowledge and experiences. There were 284 participants who registered for the 3rd Annual Ridgway Trainee Conference in 2016.

The Trainee Grant Program provides grants for our trainees to attend the Annual Meeting. There were 107 trainees who received support to attend the Ridgway Trainee Conference in 2016.

**Below: Physicians, surgeons, and scientists at the 2016-2017 Ridgway Trainee Conference**





## MAKING AN IMPACT THROUGH PATIENT EDUCATION AND AWARENESS

How can patients and families access everything they need to know about thyroid disease and treatment options? Our goal is to provide patients with the tools to be the most informed thyroid person in the waiting room. As an inclusive and compassionate community, ATA provides a collaborative relationship between physicians and patients. ATA connects physicians to patients through “Find a Thyroid Specialist” and free webinars and videos from leading thyroid experts from ATA as well as some of our partner organizations.

We focus on enhancing patient care and gaining a better understanding of treatment options through our educational resources:

- The *Clinical Thyroidology for the Public* newsletter offers the most up-to-date, cutting edge thyroid research summaries for a broad audience
- *Friends of the ATA* newsletter covers the broad spectrum of thyroid disorders and provides the most current resources available on the ATA website
- Thyroid Information Brochures
- Patient support websites from highly regarded professional and patient education organizations



**Our goal is to provide patients with the tools they need to be the most informed thyroid person in the waiting room.**

“ The ATA was a valuable resource for our family when my dad was diagnosed with Anaplastic Thyroid Cancer. When you’re faced with a detrimental diagnosis where even a few days can make the difference in life or death, understanding your options quickly is critical. The ATA website offers a one-stop shop for patients and caregivers to find specialists, current clinical trials, general thyroid cancer information, and links to other patient support groups and information. ”

Mary Catherine Petermann

- Father who was diagnosed with Anaplastic Thyroid Cancer in 2006
- He was treated at Mayo Clinic
- He has clean scans as of October 2016

## ATA HONORED IN 2016

The American Thyroid Association won the IMA Outstanding Achievement Award in 2016 for *Clinical Thyroidology for the Public*. This award is the second highest honor bestowed by IMA and an extremely challenging award to win. The American Thyroid Association also received the American Society of Association Executives (ASAE) Power of (A) Awards for its thyroid-focused Professional Clinical Guidelines and Patient Information Resources.

IMA<sup>®</sup>



## RESEARCH

### UNDERSTANDING THE IMPACT OF THYROID DISEASE AND PREGNANCY

“ The ATA has really generated an emphasis with our diverse expertise within our association to concentrate on a series of guidelines to help both the providers and patients with care on a variety of thyroid disorders. ”

Dr. Bryan Haugen  
Past ATA President

The problems associated with thyroid disease and pregnancy were first published in the 2011 ATA Professional Guidelines. Pregnancy has a profound impact on the thyroid gland. The aim of the guidelines is to inform clinicians, patients, researchers, and health policy makers about published evidence relating to the diagnosis and management of thyroid disease in women during preconception, pregnancy, and postpartum. Because there have been significant clinical and scientific advances since the guidelines were first published, the ATA Guidelines Task Force worked diligently throughout 2016 to update and publish the revised guidelines. The *2017 Guidelines of the American Thyroid Association for the Diagnosis and Management of Thyroid Disease During Pregnancy and Postpartum* feature recommendations regarding the interpretation of thyroid function tests in:

- Pregnancy
- Iodine nutrition
- Thyroid autoantibodies and pregnancy complications
- Thyroid considerations in infertile women
- Hypothyroidism in pregnancy
- Thyrotoxicosis in pregnancy
- Thyroid nodules and cancer in pregnant women
- Thyroid disease and lactation
- Fetal and neonatal considerations in pregnancy
- Screening for thyroid dysfunction in pregnancy



In addition to the 2017 guidelines, the ATA has published thyroid and pregnancy brochures that have also been translated to Spanish. The brochures offer information on hypothyroidism in pregnant women, a condition in which the thyroid gland doesn't produce enough thyroid hormone, and postpartum thyroiditis inflammation of the thyroid, which can occur in women during pregnancy.





## 2016 DONORS AND CONTRIBUTORS

We are extremely grateful to our donors whose generosity helps us carry out our mission each day!

### \$15,000 - \$24,999

Anonymous

### \$5,000 - \$14,999

Biomedical Research  
Foundation of Colorado  
Mary Ann Liebert, Inc.,  
Publishers  
Zareen Taj Mirza

### \$1,000 - \$4,999

Elsie M. Allen, M.D.  
Dr. Caroline Bauman, M.D.  
Antonio C. Bianco,  
M.D., Ph.D.  
Lewis E. Braverman, M.D.  
Cardinal Health  
Foundation Inc.  
Sally E. Carty, M.D., FACS  
M. Regina Castro, M.D.  
Terry Davies, M.D.  
Paul J. Davis, M.D.  
Gerard M. Doherty, M.D.  
Charles H. Emerson, M.D.  
Guideline Central  
Cameron Haery  
Stephanie Hansen  
Jerome M. Hershman, M.D.  
Anthony N. Hollenberg, M.D.  
IBM Employee  
Services Center  
Janice Kerr  
Michael T. McDermott, M.D.  
Jorge H. Mestman, M.D.  
John C. Morris, III, M.D.  
Janne Mylly  
N. Harris Computer  
Corporation  
Network for Good  
Johanna A. Pallotta, M.D.  
Eli and Carley Ridgway  
Susan Ridgway  
Virginia D. Sarapura, M.D.  
David H. Sarne, M.D., FACP  
Susan A. Sherman, M.D.  
Peter A. Singer, M.D.  
David J. Terris, M.D., FACS,  
FACE  
Connie Trump, PharmD  
Deni Warren

### \$500 - \$999

Ernest O. Asamoah, M.D.,  
FACP, FACE, FRCP  
Kenneth Baker  
Frank Barnes  
Andrew J. Bauer, M.D.  
The Benevity Community  
Impact Fund  
Victor J. Bernet, M.D.  
Mary Ann Biernbaum  
John Bown  
The CS Caerus Corporation  
DBA Anytime Fitness  
James A. Fagin, M.D.  
Steven and Susan Fanaroff  
Alan P. Farwell, M.D.  
R.H. Hamre  
Celeste B. Hart, M.D.  
James V. Hennessy, M.D.  
Dale Hill  
JC Penney Corporation  
The Kelly Charitable Fund  
Peter A. Kopp, M.D.  
Elliot G. Levy, M.D.  
Susan Maturlo, M.D.  
Pledgeling Foundation  
Pura Vida Bracelets  
Dr. Nicholas J. Sarlis, M.D.,  
Ph.D., FACP  
Martin Schlumberger, M.D.  
Rebecca E. Schweppe, Ph.D.  
J. Woody Sistrunk, M.D.  
Barbara Smith, CAE  
Julie Ann Sosa, M.D.,  
MA, FACS  
Dr. Walter Weinstein  
Whitney Woodmansee, M.D.

### \$250 - \$499

Mr. and Mrs. James Alford  
Ridha Arem, M.D.  
Fuad S. Ashkar, M.D.  
Rebecca S. Bahn, M.D.  
Alan Balsam, M.D.  
Andy Beasley  
Booster U.S.  
Sheue-yann Cheng, Ph.D.  
Community Health Charities  
David S. Cooper, M.D.  
Nariman Dash, M.D.

### \$250 - \$499 (CONTINUED)

Chris Dattilo  
Catherine A. Dinauer, M.D.  
DonateWell - DW  
General Fund  
Clifford and Sharon Doyle  
Richard Eismann  
Vahab Fatourechhi, M.D.  
Delbert A. Fisher, M.D.  
Bdale Garbee  
David Garcia  
Romulo Garza, Ph.D.  
Give with Liberty  
Whitney S. Goldner, M.D.  
Patricia S. Harris  
Bryce Harward  
Harry Haynes  
Helmut Huber, M.D.  
Diane Hymas  
Darrel Johnson  
Johnson & Johnson  
Employee Fund  
Stephen H. LaFranchi, M.D.  
Jennifer E. Lawrence, M.D.  
John H. Lazarus, M.D.  
Paul Margulies, M.D.  
Fumio Matsuzuka, M.D.  
Edward Merker, M.D.  
Caroline Thuy Nguyen, M.D.  
Suzanne Nielsen  
Christine Packard  
Achilles Paparsenos, M.D.  
Kepal Patel, M.D.  
Gary M. Pepper, M.D.  
Richard A. Prinz, M.D.  
Richard J. Robbins, M.D.  
Edward Bernard Ruby, M.D.  
Jun Sasaki, M.D., Ph.D.  
David Schwartz, M.D.  
Christine Spitzweg, M.D.  
St. Mary's Ryken  
High School National  
Honor Society  
Ronald B. Stein, M.D.  
Tracy Sweet  
Terry Taylor, M.D.  
Kevin Tedesco  
Daniel Joseph Toft,  
M.D., Ph.D.  
Truist

### \$250 - \$499 (CONTINUED)

United States  
Cold Storage, Inc.  
United Way  
Irina E. Veronikis, M.D.,  
FACP, FACE  
Wells Fargo Community  
Support Campaign  
YourCause, LLC  
YourCause, LLC  
Trustee for New York Life

### \$100 - \$249

Sara Ahmadi, M.D., ECNU  
Lori Antolec  
Naohiro Araki  
Naoko Arata, M.D., Ph.D.  
Craig Bailey  
Giuseppe Barbesino, M.D.  
Charles P. Barsano, M.D.,  
Ph.D.  
Luigi Bartalena, M.D.  
Sylvia J. Batista, M.D.  
Diego Bellabarba, M.D.  
Mr. and Mrs.  
Michael Bevenoure  
George Bianco  
Laura Bianco  
Michael Bianco  
Jessie Block-Galarza, M.D.  
Valerie Brady  
Eileen Call  
Sharleene E. Cano Quiara  
Lia Caravella  
Nathan Eric Carnell, M.D.,  
FACE, ECNU  
Tira Chaicha-Brom, M.D.  
Carol Clark  
David Cole  
Cybergrants  
Doug Doretto  
Lucy Dubow  
Norman L. Eberhardt,  
Ph.D., FACB  
Earl Evans  
Lisa Evoy-Goodman  
Angela Feyerabend  
Douglas Forrest, Ph.D.  
David F. Gardner, M.D.  
Robert Garland

### \$100 - \$249 (CONTINUED)

Ana Sofia Germano, M.D.  
Hossein Gharib, M.D.  
Melanie Goldfarb, M.D., MS,  
FACS, FACE  
Francis S. Greenspan, M.D.  
Healthcare Associates  
Credit Union (HACU)  
Georg Hennemann, M.D.,  
Ph.D., FRCP, FRCPE  
Carlos Hernandez-Cassis, M.D.  
Dorothy Hickey  
Thomas Higman  
Rebecca Hodle  
Richard and Maureen  
Housfeld  
Harriet Howe  
Scott Hum  
James R. Hurley, M.D.  
Mary E. Jelks  
Dalan Jensen  
David Jones  
Jacqueline Jonklaas, M.D.  
JP Morgan Chase & Co.  
Harold and Ruth Kampe  
Ken Kazahaya, M.D.,  
MBA, FACS  
Shree Kenghe  
Brian W. Kim, M.D.  
Joshua P. Klopper, M.D.  
Joel Kolbensvik  
P. Reed Larsen, M.D.  
Stephanie L. Lee, M.D., Ph.D.  
James Lenardon  
Gloria Leone  
Larry C. Levin, M.D.  
Tamieka Lewis-Chavez  
Chienying Liu, M.D.  
Virginia A. LiVolsi, M.D.  
William T. Loser  
Mark A. Lupo, M.D., FACE,  
ECNU  
Kevin Maccarella  
Susan J. Mandel, M.D.  
Judith McCombs  
Sandra M. McLachlan, Ph.D.  
Donald Soutter Alexander  
McLeod, M.D.  
Dan V. Mihailescu, M.D.  
**(continued on page 12)**

## 2016 DONORS AND CONTRIBUTORS (CONTINUED)

### \$100 - \$249 (CONTINUED)

Stacey A. Milan, M.D., FACS  
 Masatomo Mori, M.D., Ph.D.  
 Jennifer A. Morrison,  
 M.D., Ph.D.  
 Shigenobu Nagataki,  
 M.D., Ph.D.  
 Molly Newman  
 New Bloomfield  
 Elementary School  
 Anna Norum  
 Lisa A. Orloff, M.D., FACS, FACE  
 Mark Osterholt  
 Mandy Overton  
 Michael Parsons  
 Elizabeth N. Pearce, M.D.  
 Craig Pepin  
 Sean Phelan  
 Gregory W. Randolph, M.D.  
 Basil Rapoport, MBCHB  
 Samuel Refetoff, M.D.  
 Miriam O. Ribeiro, Ph.D.  
 Ann Roman  
 David S. Rosenthal, M.D.,  
 FACP, FACE  
 Salil D. Sarkar, M.D.  
 David Schachter  
 Arthur B. Schneider,  
 M.D., Ph.D.  
 Kathryn G. Schuff, M.D., MCR  
 Farrell R. Seeney  
 Alison M. Semrad, DO  
 Steven I. Sherman, M.D.  
 Brendan C. Stack, Jr., M.D.  
 David Steward, M.D.  
 Robert Stewart  
 Patti Stickler  
 Masahiro Sugawara, M.D.  
 Sandeep Tamboli  
 Amonrat Teemsma  
 Beatriz Tandler, M.D.  
 Leon Thompson  
 Alan Turf  
 United Way  
 of Greater Philadelphia  
 Martha A. Zeiger, M.D.,  
 FACS, FACE

### Up to \$99

AbbVie Foundation Employee  
 Engagement Fund  
 Melissa Abdelbaky  
 Stephanie Abney  
 Rima Abukhalil

### Up to \$99 (CONTINUED)

Dania Abushanab, M.D.  
 Jonathan and Danielle Agins  
 Henry Alexander  
 Allnutt Funeral Service  
 Aaron Glen Ang  
 Anonymous  
 Anonymous  
 Jane Arrington  
 Pedro Avalos  
 Tanushri Banerjee  
 Rose M. Banner  
 Joan Terry Baris  
 Henri Bartholomot  
 Maylene A. Baseden  
 Scott Beasley  
 Antin Bendersky  
 Salvatore Benvenga, M.D.  
 Susan B. Bercaw  
 Ralph and Roberta  
 Beyersdorf, D.D.S.  
 Janice and Mark Bierschbach  
 Brittany Bohinc  
 Henderson, M.D.  
 Douglas and Beth Bohlen  
 Wade Bond  
 Margaret F. Bowers  
 Virginia E. Bowers  
 Craig Brenner  
 Bright Funds Foundation  
 Stephanie Brizuela  
 Melissa Burns  
 Maria Cristina Espera  
 Caga-Anan, M.D.  
 Derek Chan  
 Adonia Calhoun Coates, CMP  
 Peggy Coghill  
 Dr. Harvey Crowder  
 Mitchell Daks  
 Dawn Davis  
 Melissa DeCesare  
 Jaydira Del Rivero, M.D.  
 Johannes W. Dietrich, M.D.  
 Tammy DiManna  
 Doris S. Donaldson  
 Kathleen Dugan  
 Joan Duggan  
 Daniel S. Duick, M.D., FACE,  
 FACP  
 Leonidas Duntas, M.D.  
 Mete Duren, M.D.  
 Esther Ekpe, Ph.D.  
 Jordan England  
 Douglas B. Evans, M.D.

### Up to \$99 (CONTINUED)

Faustina Fayó-Abrams  
 Pamela Ferguson  
 Luis Renato Figueroa, M.D.  
 FirstGiving  
 Sarah Fitzgerald  
 Patricia Fraley  
 Shuji Fukata, M.D.  
 Caitlin Gamble  
 James Gavin  
 Daniel Getachew-Smith  
 Kwala Gibson  
 Benjamin Joseph  
 Gigliotti, M.D.  
 Eugene and Susan Goldberg  
 Cristiane Jeyce  
 Gomes-Lima, M.D.  
 Nancy Hassman  
 Cindy Hataway  
 Megan R. Haymart, M.D.  
 Ben Haynes  
 Jennifer Hedgespeth  
 Joanne Hedgespeth  
 Nancy Hedgespeth  
 Marie Hickey  
 Kelly Hoff, CAE  
 Matthew and Rachel Hogan  
 Independent Charities  
 of America  
 Samir Anwar Jabbar, Jr., MBBS  
 Meryem Karad  
 Farah Karim  
 Andrea Kaufman  
 Daniel and Misty Keller  
 Jacqueline Kung, M.D.  
 Mr. and Mrs. Matt Kuntz  
 Jean Kutner, M.D.  
 Lake Highland  
 Preparatory School, Inc  
 Steven Lefkow  
 Angela M. Leung, M.D., MSc  
 Heather Anne Lochnan, M.D.  
 Meghan Luff  
 Susanne Ma  
 Thomas and Judith Magara  
 Ashton Mak  
 Janet Mannino  
 Mona Mansour  
 Penny Marshall  
 Melissa Martinez  
 David Mathis  
 Andrew Matta  
 Leslie Mcnair  
 Dr. Joseph C. Meek, M.D.

### Up to \$99 (CONTINUED)

Arturo Mendoza, Sr., Ph.D.  
 Morgan Stanley  
 Morgan Myers  
 Charles and Marla Myklegard  
 Ron Samuel Newfield, M.D.  
 Anh Viet Nguyen, M.D.  
 Brenda Oppenheim  
 Josette A. Paige  
 Lynn Patinkin  
 Pepsico Foundation  
 Korey Pieper  
 Jeffrey Pincus  
 Harry Pliscof  
 Kevin Quinn  
 Mr. and Mrs.  
 David Richardson  
 Kimberly Ridgeway  
 Johanna Roche  
 Luciana Sanchez, M.D.  
 Stephanie Muy Spong, M.D.  
 Nadine Sherif  
 Carol Shohet  
 Joan A. Shry  
 Paul and Sharon Slagle  
 Katarina Slama  
 Donna Soto  
 Benjamin Stahl  
 Susan and Jason Stinson

### Up to \$99 (CONTINUED)

Judy St. Martin  
 Stone Hill School  
 Carol A. Struve  
 James Stubbmann  
 James W. Suliburk, M.D.  
 Janith Suy  
 Tamara Swander  
 Yaron Tomer, M.D., FACP, FACE  
 Harlin and Rebecca Trupp  
 Ralph P. Tufano, M.D.,  
 MBA, FACS  
 Steven Turf  
 United Way  
 of Chester County  
 Anna VanderHeiden  
 Vanguard Community Fund  
 Meg Veneziano  
 Albert Vernon  
 Carmen Vanessa  
 Villabona, M.D.  
 Hermann Vogelstein  
 Judson Vosburg  
 Johanna Walczyk  
 Karn Wejaphikul, M.D.  
 Caitlin Alise White, M.D.  
 Sheree Willis  
 Louis Wolfram  
 Dr. & Mrs. Richard Wulf

## CORPORATE LEADERSHIP COUNCIL

The ATA Corporate Leadership Council (CLC) provides a unique and valuable forum for open communication between the ATA and the community of corporations that share interest in thyroid health and biology. We are very grateful to our 2016 Corporate Leadership Council partners for their ongoing support:

- Abbvie
- Eisai, Inc.
- Exelixis, Inc.
- Genzyme Corporation
- Mary Ann Liebert, Inc. Publishers
- Quest Diagnostics
- Rosetta Genomics
- Veracyte

The American Thyroid Association makes every effort to acknowledge our generous donors. If we inadvertently forgot or misspelled your name in this annual report, please contact us at [thyroid@thyroid.org](mailto:thyroid@thyroid.org).

## WHAT DOES YOUR DONATION SUPPORT?



## GIVE TODAY AND SUPPORT THYROID EDUCATION AND RESEARCH PROGRAMS

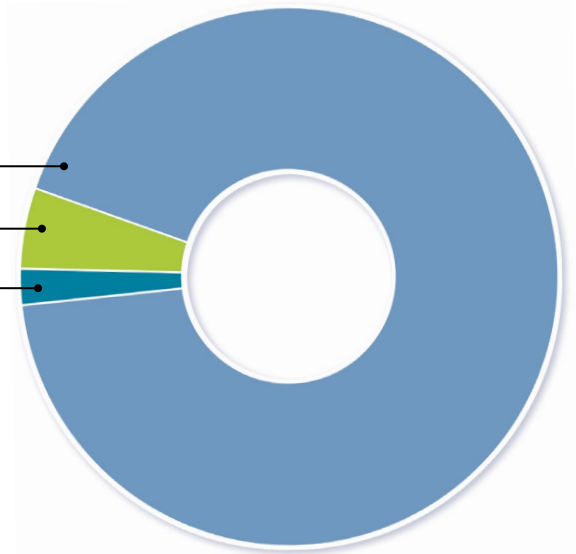
Your contribution has a tremendous impact on patients living with thyroid disease and thyroid cancer as well as the scientists and researchers who are raising awareness of available treatments. Thank you for your support.



## 2016 EXPENSES

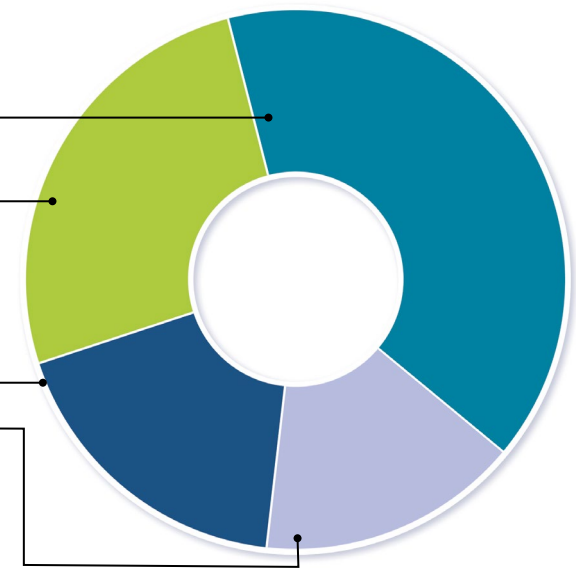
### FISCAL YEAR 2016 EXPENSES

Program Services	<b>93%</b>	\$2,654,159
Fundraising	<b>5%</b>	\$138,608
Management	<b>2%</b>	\$61,237
<b>Total:</b>		<b>\$2,854,004</b>



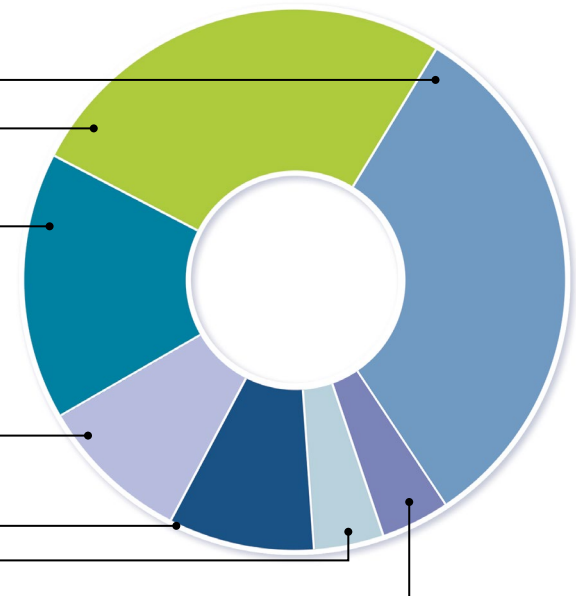
### TOTAL PROGRAM SERVICES EXPENSES

Education Scientific Meetings	<b>40%</b>	\$1,057,010
Education Public, Patient, and Professional Awareness	<b>26%</b>	\$687,683
Research	<b>18%</b>	\$490,458
Education Publications	<b>16%</b>	\$419,008
<b>Total:</b>		<b>\$2,654,159</b>



### TOTAL FUNCTIONAL EXPENSES

Human Resources	<b>32%</b>	\$911,992
Education and Meetings	<b>26%</b>	\$730,824
Research	<b>16%</b>	\$465,000
Governance	<b>9%</b>	\$254,405
Communication	<b>9%</b>	\$245,993
Infrastructure	<b>4%</b>	\$130,435
Information Technology	<b>4%</b>	\$115,355
<b>Total:</b>		<b>\$2,854,004</b>



## 2016 OPERATING INCOME

(January - December 2016)

Meetings .....	\$1,307,352
Publications .....	\$451,872
Membership .....	\$415,886
Grants .....	\$393,750
Contributions .....	\$186,159
Sponsorships .....	\$80,000
<b>Total Operating Income .....</b>	<b>\$2,835,019</b>

It is estimated that  
**20 million**  
 Americans have some form of  
 thyroid disease and up to  
**60 percent**  
 of these individuals are undiagnosed.

Patients living with thyroid disease  
 want to and can  
**live life to the fullest.**  
 The impact of thyroid research allows  
 for patients to be diagnosed as early as possible,  
 therefore minimizing risks and complications  
 of thyroid disease.



## ATA BALANCE SHEET

(December 31, 2016)

### ASSETS

<b>Current Assets</b>	
Cash and Cash Equivalents .....	\$1,673,723
Donations, Grants, and Dues Receivable .....	\$145,273
Prepaid Assets .....	\$32,484
<b>Total Current Assets .....</b>	<b>\$1,851,486</b>
<b>Fixed Assets, Net .....</b>	<b>\$77,618</b>
<b>Investments .....</b>	<b>\$5,999,008</b>
<b>Other Assets</b>	
Deposits .....	\$29,013
Thyroid Library .....	\$18,865
Trademarks, Net .....	\$29,826
<b>Total Other Assets .....</b>	<b>\$77,704</b>
<b>Total Assets .....</b>	<b>\$8,005,810</b>

### LIABILITIES & NET ASSETS

<b>Current Liabilities</b>	
Accounts Payable & Accrued Expenses .....	\$225,769
Deferred Revenue .....	\$497,161
<b>Total Current Liabilities .....</b>	<b>\$722,930</b>
<b>Deferred Rent .....</b>	<b>\$25,941</b>
<b>Total Liabilities .....</b>	<b>\$748,871</b>
<b>Net Assets</b>	
Unrestricted .....	\$743,473
Unrestricted, Board Designated .....	\$2,289,784
Temporarily Restricted .....	\$997,599
Permanently Restricted .....	\$3,226,083
<b>Total Net Assets .....</b>	<b>\$7,256,939</b>
<b>Total Liabilities &amp; Net Assets .....</b>	<b>\$8,005,810</b>

## PARTNER ORGANIZATIONS

The American Thyroid Association is grateful for the following partnerships. Our alliance partners connect patients with education and resources that advance our mission of preventing and treating thyroid disease through excellence in research, clinical care, education, and public health. We look forward to future collaborations and continuing to work together in new capacities.

- Bite Me Cancer
- Light of Life Foundation
- Graves' Disease and Thyroid Foundation
- Medullar Thyroid Cancer
- ThyCa: Thyroid Cancer Survivors' Association, Inc.
- Thyroid Cancer Canada
- Thyroid Federation International



## OUR LEADERSHIP

### BOARD OF DIRECTORS

#### *President*

John C. Morris, III, M.D.

#### *Secretary/Chief Operating Officer*

Victor J. Bernet, M.D.

#### *Treasurer*

David H. Sarne, M.D., FACP

#### *President-Elect*

Charles Emerson, M.D.

#### *Past-President*

Antonio Bianco, M.D., Ph.D.

#### *Treasurer-Elect*

Julie Ann Sosa, M.D.

#### *Directors*

Andrew J. Bauer, M.D.

Sally E. Carty, M.D., FACS

M. Regina Castro, M.D.

Anthony N. Hollenberg, M.D.

Jacqueline Jonklaas, M.D.

Rebecca E. Schweppe, Ph.D.

J. Woody Sistrunk, M.D.

Christine Spitzweg, M.D.

Ralph P. Tufano, M.D., MBA

#### *Executive Director*

Barbara R. Smith, CAE

## FOLLOW US ON SOCIAL MEDIA!

### STAY UP TO DATE ON THE LATEST THYROID NEWS.



@AmThyroidAssn



ThyroidAssociation



american-thyroid-association

@thyroidfriends

The American Thyroid Association Headquarters

6066 Leesburg Pike

Suite 550

Falls Church, Virginia 22041

[www.thyroid.org](http://www.thyroid.org)

[thyroid@thyroid.org](mailto:thyroid@thyroid.org)

703.998.8890

800.849.7643



AMERICAN **THYROID** ASSOCIATION

ATA | *Founded 1923*

